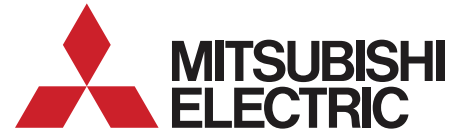




Medium Voltage Department

■ **72.5kV – 40kA Gas Circuit Breakers**

Model # 70SFMT-40E-A



Optional Stainless Steel Cabinet Shown

Mitsubishi Electric Design Quality

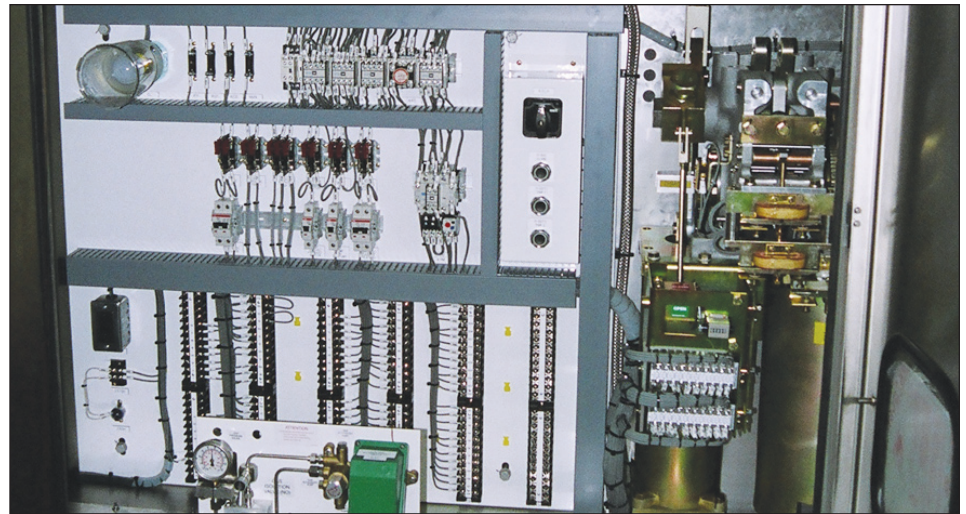
- SST Ground Pads
- Galvanized Frame
- Aluminum Tanks
- Slip-Over BCTs
- Protected Linkage and Gas System (Inside Cabinet)
- Optional Composite Bushings
- Meets ANSI and IEC Standards
- Short Lead Time

Mitsubishi Electric Technology

- True Puffer Interrupter
- Fifteen Minute Contact Inspection / Change-Out
- Two-Part Gas Sealing System: EPR O-Rings at all Static Joints, RTV to Seal-Out the External Environment
- Totally-Enclosed Gas Handling System
- Minimal Connection Interfaces

The BM-1 Mechanism

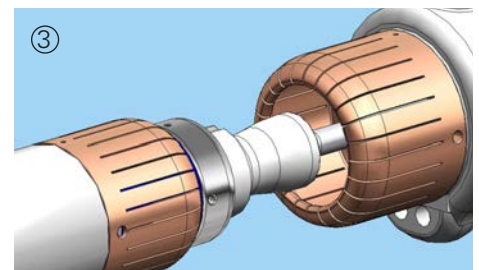
- Helical Spring Open / Close
- Three-Cycle Interruption
- Universal Motor
- Dual Trip Coils Available
- 20a, 20b, Auxiliary Switches
- Two Grease Points Every Six Years
- 10,000 Mechanical Operations



①

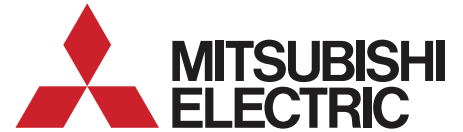


②



- ① Totally-Enclosed Gas System and Operating Linkage
- ② Slip-Over BCTs
- ③ Superior Mitsubishi Contacts and Puffer Design (Inspect / Change Contacts with Bushings in Place)

Technical Specifications

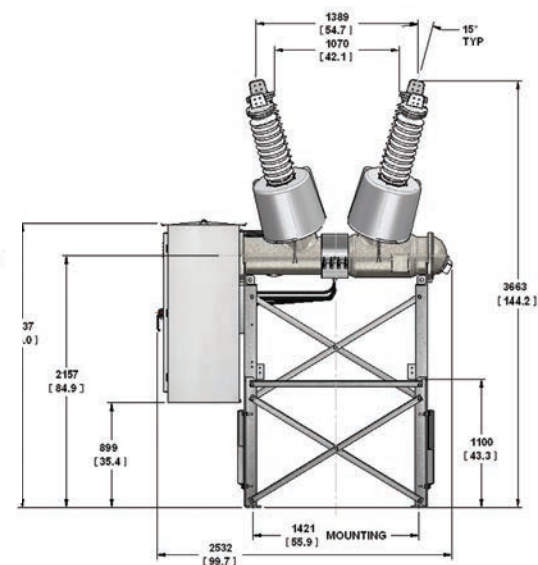
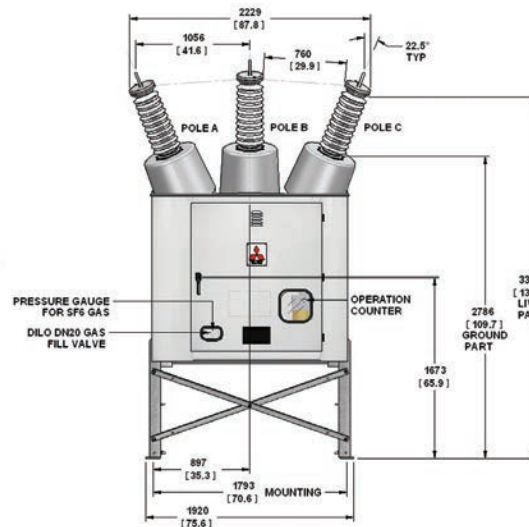
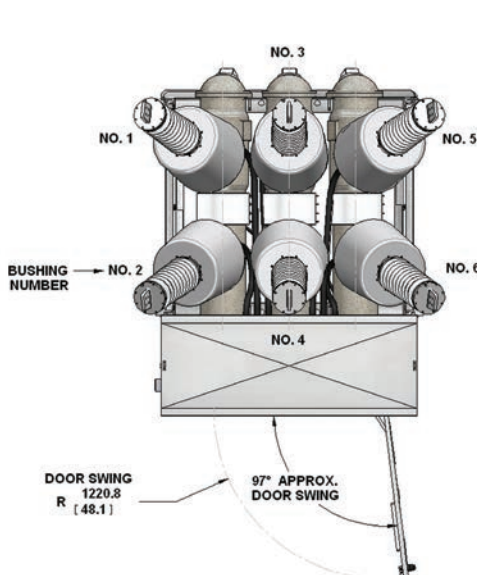
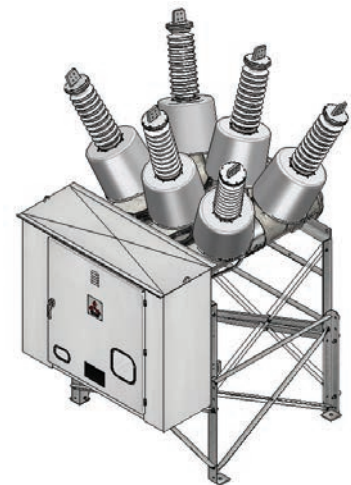


Ratings (Tested to ANSI / IEEE & IEC Standards or Higher)

Description	Ratings	Description	Ratings
Breaker Type	70SFMT-40E-A	Close and Latch Capabilities	72.5kA RMS; 104kA Crest
Maximum Voltage	72.5kV	Rapid Duty Cycle	0-0.3s-CO-15sec-CO-50sec-CO
Nominal Voltage	34.5kV - 69kV	Opening Time	28 ms (1.7 Cycles)
Full-Load Current	1,200A, 2,000A, 3,000A, 4,000A	Closing Time	100 ms (6.0 Cycles)
Short-Circuit Current	40kA	Reclosing Time	333 ms (20.0 Cycles)
Interrupting Time	3 Cycles	Gas Pressure	71psig (5kg/cm ²) @ 68°F
Frequency	60Hz	Rated Altitude	1,676 m (5,500 ft.)
Full-Wave Withstand	350kV BIL	Temperature Range (Standard)	40°C to -35°C (104 to -31°F)
Bushing Creep (Standard)	1,315 mm (51.77 in.)	Minimum Temperature with Tank Heaters	-50°C (-58°F)
Low Frequency Withstand	160kV	Seismic Qualification Level	Highest Level Available as Option
Permissible Trip Delay	2 Second		

Specifications

Total Weight - 2,205kg (4885 lb.)	Dynamic Loading
SF6 Gas Weight - 18.14kg (40 lb.)	Horizontal - 1,000kg (2,205 lb.)
Rated Pressure - 71 psig (490 kPag)	Vertical Up - 1,000kg (2,205 lb.)
Insulator	Vertical Down - 1,800kg (3,970 lb.)
Type - Gas-Filled	
Standard Creep - 1,315 mm (51.77 in.) (Optional High Creep Available)	
Surface Treatments	
Frame - Hot Dip Galvanized	
Control Housing - ANSI 70 Light Gray	
SF6 Tanks - Unfinished Aluminum	
BCT Covers - Unfinished Aluminum	
Porcelain - Glaze, ANSI 70	





MITSUBISHI ELECTRIC POWER PRODUCTS, INC.

Corporate Headquarters

Thorn Hill Industrial Park
530 Keystone Drive
Warrendale, PA 15086
Phone: (724) 778-5111
Facsimile: (724) 778-5146

Medium Voltage Department

Thorn Hill Industrial Park
510 Keystone Drive
Warrendale, PA 15086
Phone: (724) 772-2555
Facsimile: (724) 779-3368
Email: MVSales@meppi.com